

**Features**

- Available in 27 finishes including 12 PVD finishes
- All brass construction
- Max Flow Rate: 16 gpm (60.6 L/min) at 60 psi
- Comes as complete set with trim and valves

**Codes/Standards Applicable**

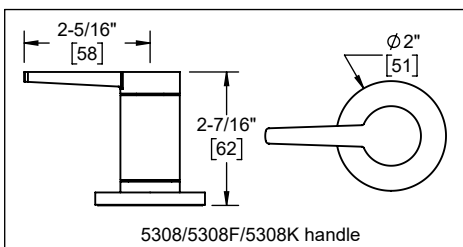
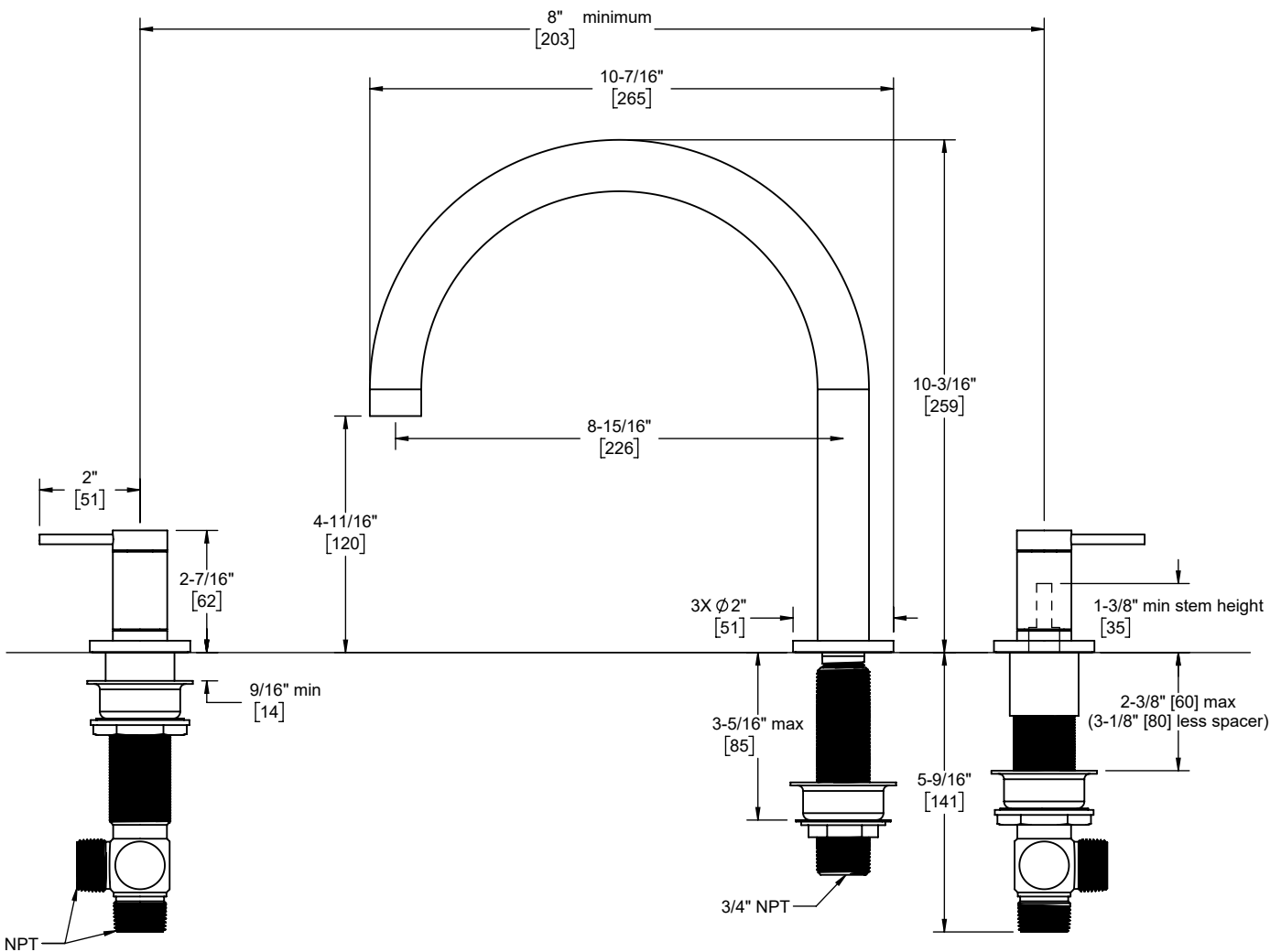
Product meets or exceeds the following:

- ASME A112.18.1/CSA B125.1
- Commonwealth of MA
- ADA compliant
- Installation of upstream tempering device may be required (verify local codes)



5208K shown

5208  
5208F  
5208K  
5308  
5308F  
5308K



| Through-Hole Specifications |                |               |               |
|-----------------------------|----------------|---------------|---------------|
|                             | Min            | Recommended   | Max           |
| Spout:                      | Ø 1-1/16" [27] | Ø 1-3/8" [35] | Ø 1-1/2" [38] |
| Valve:                      | Ø 1-3/8" [35]  | Ø 1-1/2" [38] | Ø 1-1/2" [38] |