

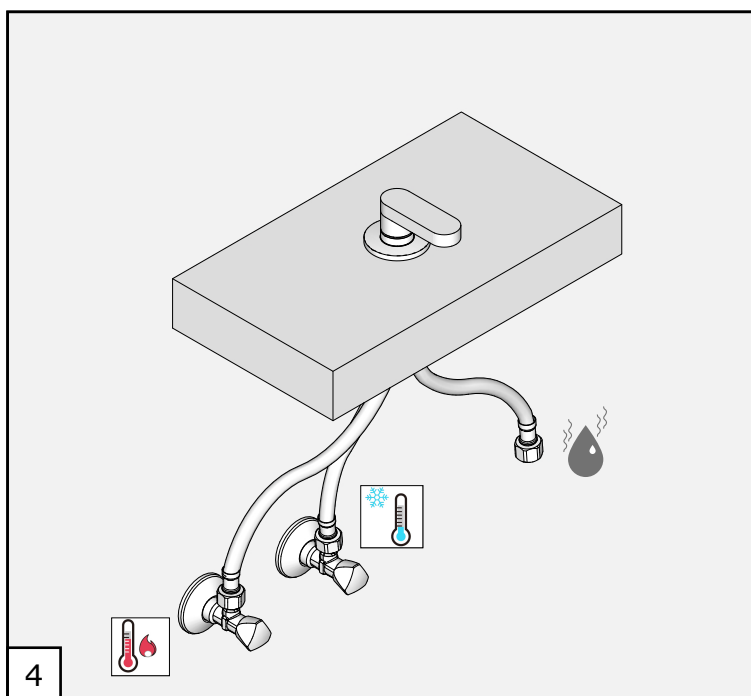
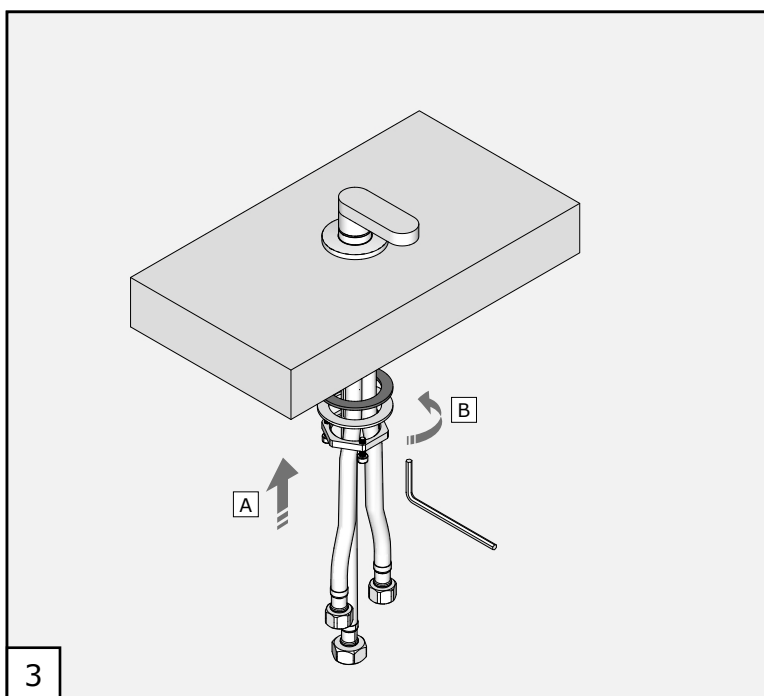
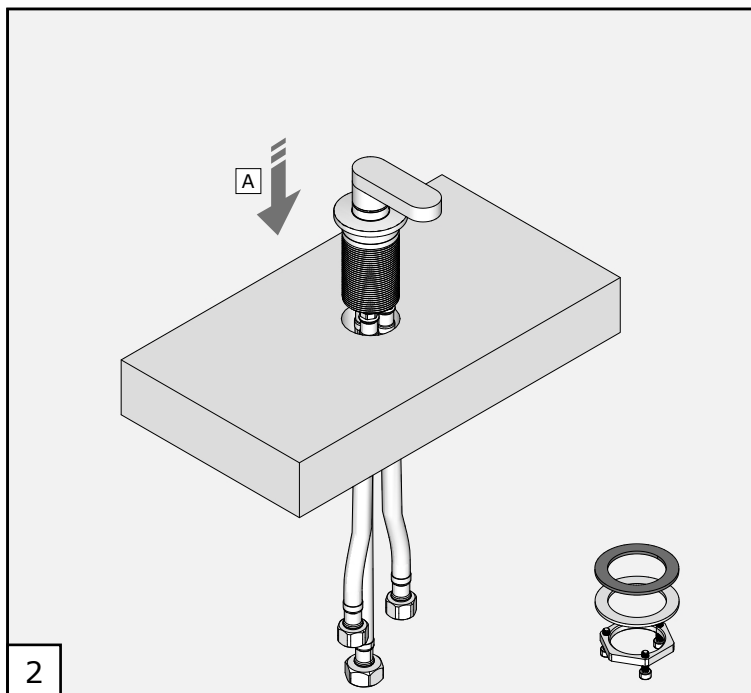
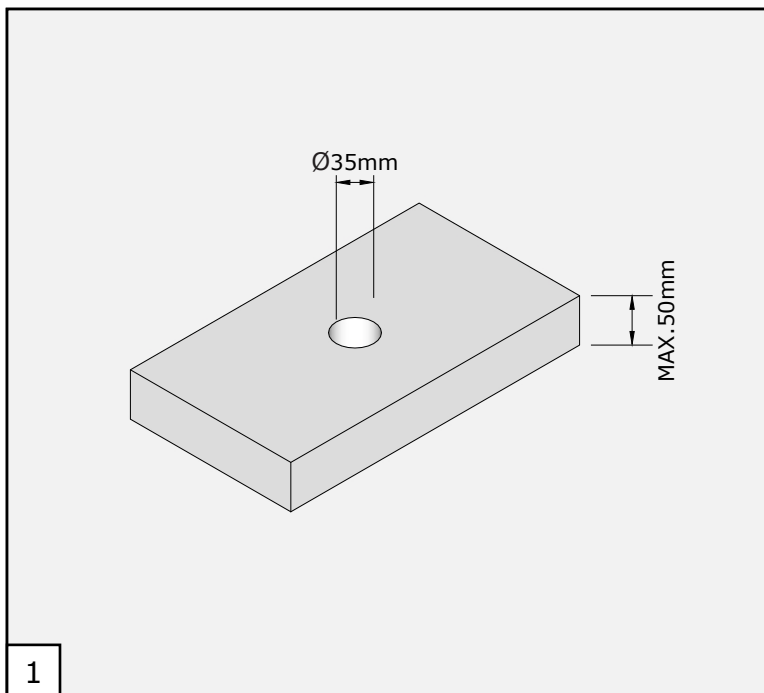
# John Pawson by COCOON

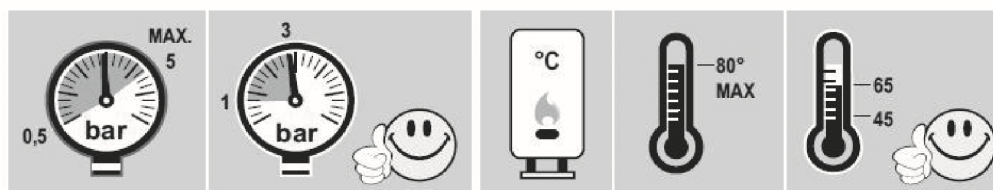
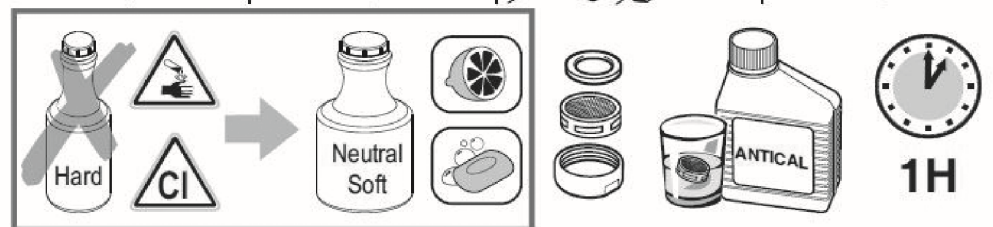
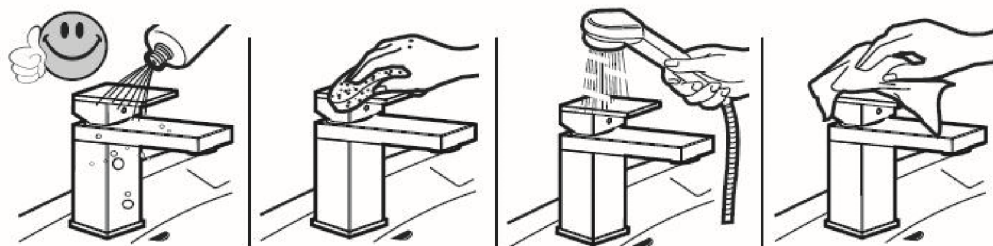
JP-04

## TECHNICAL WARNINGS

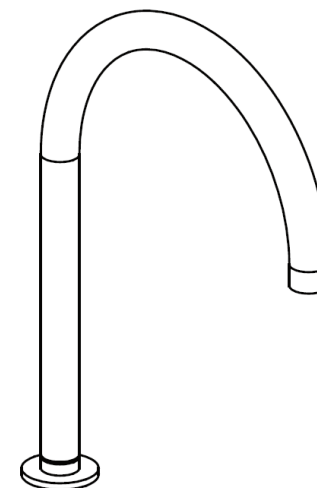
The pipes have to be rinsed thoroughly before installation to avoid pressure differences.

Use of a pressure reducer when static pressure is higher than 5 bar to avoid damage to the cartridge.





John Pawson  
by  
COCOON



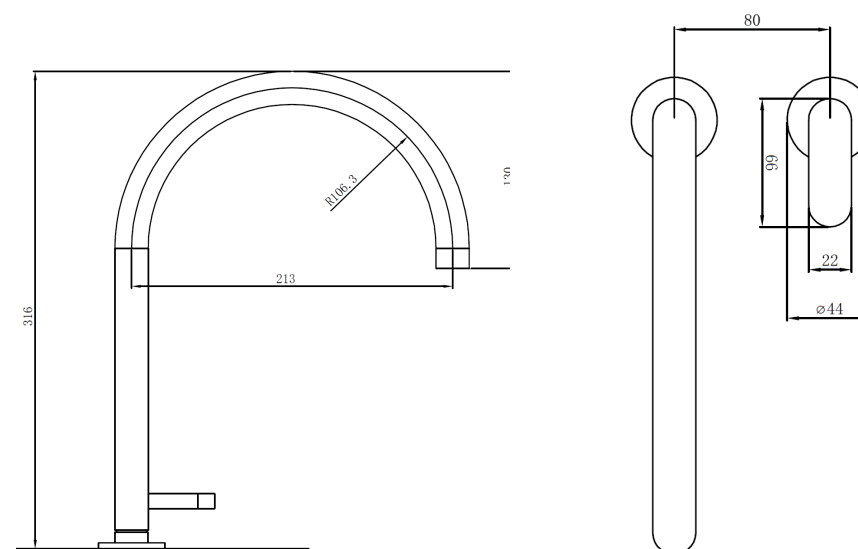
JP-11.2

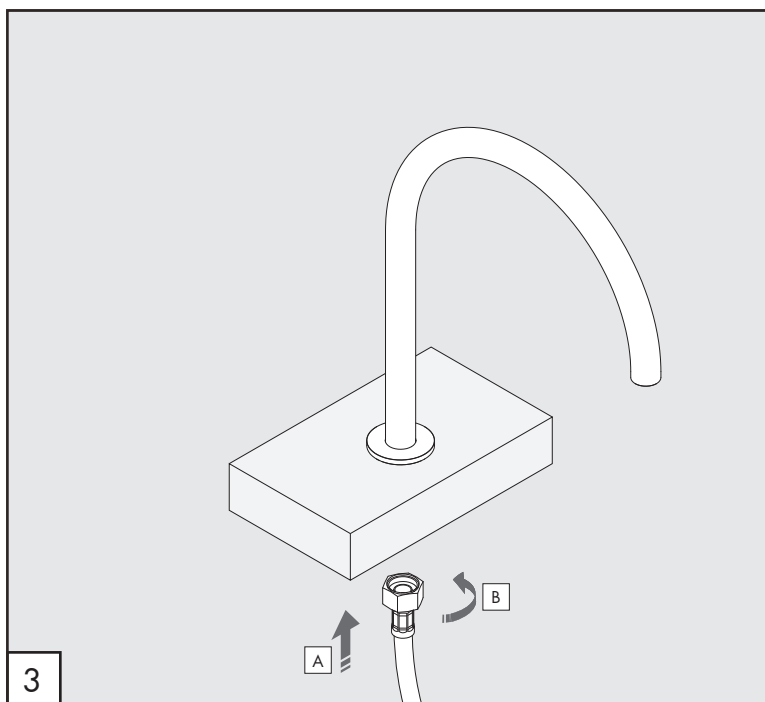
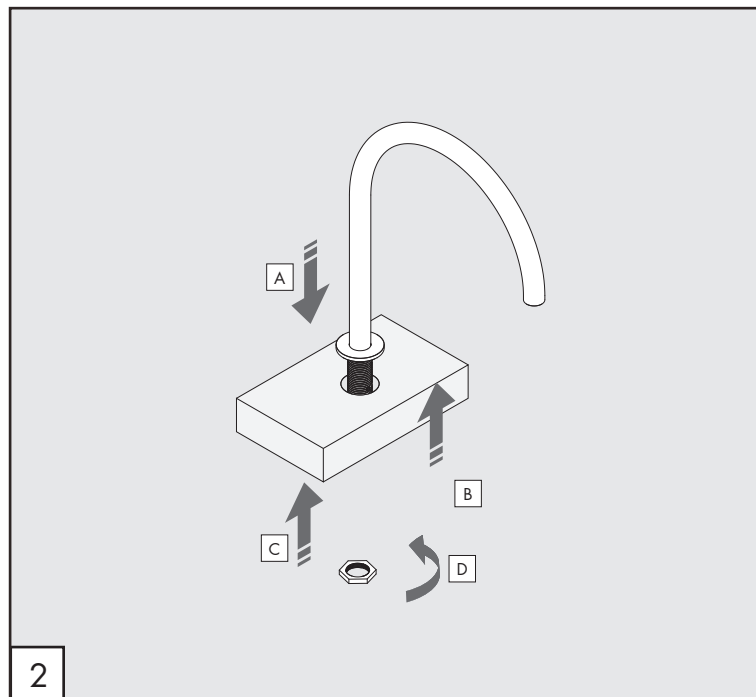
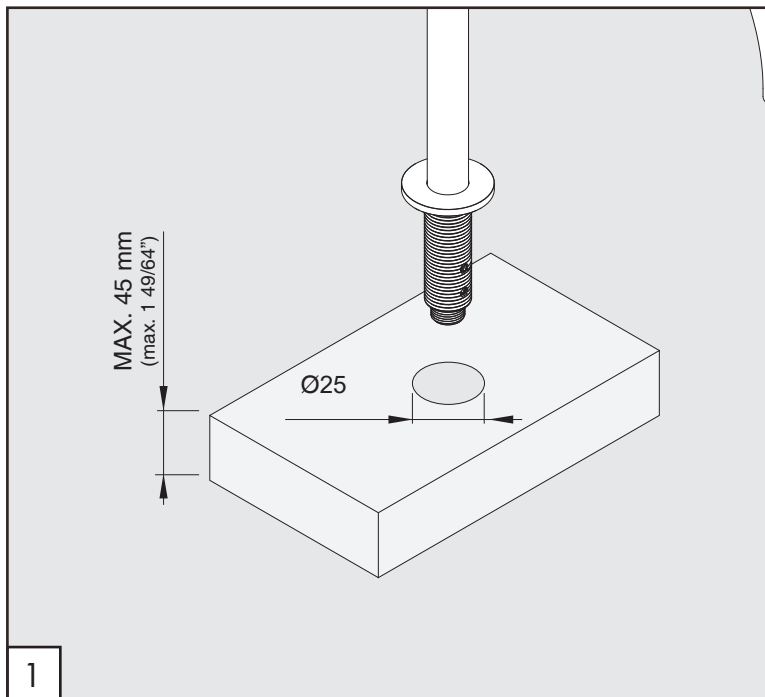


**Please ensure you comply with the following instructions to optimise performance of the mixer:**

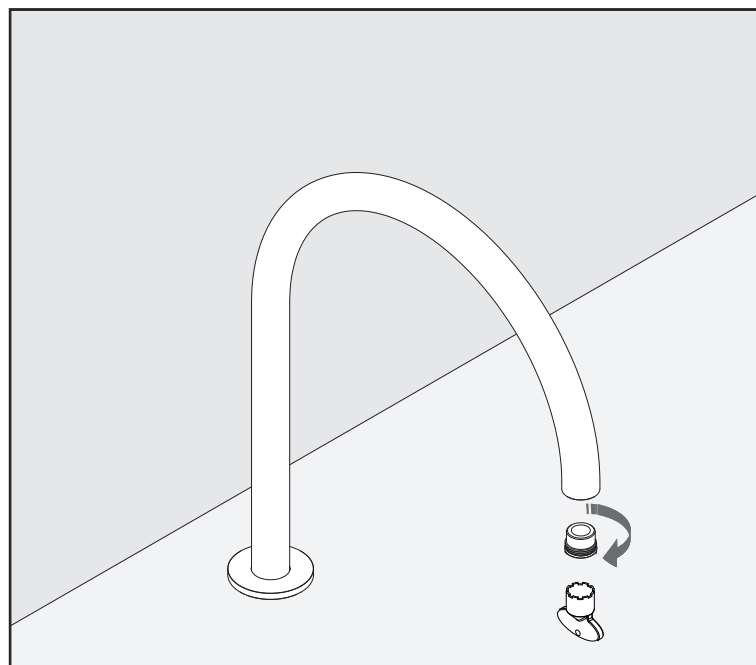
- All pipework must be thoroughly flushed prior to installation
- For USA installation, please fix the USA NPT adapters on top of the pre-installed water connections
- Always first test the system with water pressure before closing the walls
- Optimal water pressure 3 BAR / temperature should not exceed 65°C/149°F
- Please read all installation instructions carefully

**Failure to comply with manufacturers recommendations will void warranty**





PULIZIA / CLEANING / SAUBEKEIT / LIMPIEZA / NETTOYAGE



# John Pawson by COCOON

## JP11.2

### Operating conditions

-Recommended flow temperature	≤65°C
-Maximum flow temperature momentary	≤90°C
-Minimum flow pressure	2 bar
-Maximum flow pressure	5 bar
-Recommended operating pressure	3 bar
-Test pressure	10 bar

### Attention of the plumber

- The pipes have to be rinsed thoroughly before installation
- Avoid pressure differences between hot / cold water supply
- Use of pressure reducer when static pressure is higher than 5 bar to avoid damage the cartridge.

AERATORI IN DOTAZIONE / AERATORS INCLUDED

 Aeratore montato / Mounted aerator  
5.5 l/min / 1.2 gpm